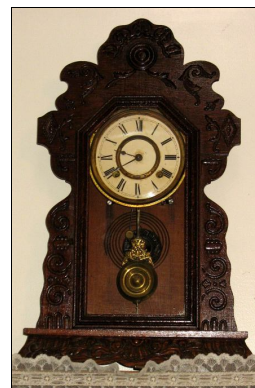


PUBLIC AUCTION OF FURNITURE, HH GOODS, GAS APPLIANCES. TOOLS & GUNS SAT., OCT. 9, 2010 9:00 A.M.

Located at 471 Twin Elm Rd., Strasburg, PA 17579. DIRECTIONS: From the square in Strasburg take W. Main St., two blocks turn left onto S. Jackson St., 1/2 mile turn right onto Twin Elm Rd., 3/4 mile to auction.

FURNITURE SOLD FIRST AT 9:00 A.M.

Glass Door Corner Cupboard, 32"dx81"h; Empire Server; 4 Pc. Double Bedroom Suite; 12 Fiddle Back Chairs (Ebersole 1967); Kitchen Table w/Boards; Oak Center Tables; Wash Stand; 6 Cane Seated Chairs; 4 Pressed Back Chairs; Grained Wood Box; Chest of Drawers; Rocking Chairs; Sofa Bed; Recliners; Shelf Clock; Plant Stands; Slant Top Desk; Franklin Sewing Machine; Desk; Doll Bed; Oak Rocker & Chair; Oak Wall Phone; Oak Horse Shoes & Bitt Picture Frame.



APPLIANCES: 12 cu' Crystal Gas Refrig.; Premier Gas Range; Magic Chef Gas Range; Elect. Kenmore Refrig.; Wringer Washer w/Air Motor.

HH GOODS: Glassware; Cookware; Flatware; S.S. Kettle; 7 Pc. Water Set; 6 Gal. Crock; Scoop Scales w/Weights; Bedding; Fancy Work; Hooked Rugs; Amish Runners; Oil Lamp w/Reflector; Berry Carrier; Apple Dryer; Ice Tongs; Canning Jars; Wooden Peck; Quilting Frame; Assort. Books; Adv. Boxes; Meat Saw; Wash Board; Twin Tub; Gas Lanterns.

TOOLS: 20' Alum. Plank; Troweling Machine; B&D 10" Miter Saw; 7-1/4" Air Cir. Saw; Makita 10" Air Miter Saw; Makita 10" Table Saw; 6" Jointer; Bostitch 3-1/4" Nail Gun; Drywall Router & Screw Gun; Milwaukee 1/2" Elect. Drill; Bench Vise; Bull Float; Transit; Levels; Block Plane; Stanley Molding Plane; 2 Alum. Ladder Jacks; Pole Jacks; 40' Wooden Ext. Ladder; 10'x20' Pole Frame Canopy; Log Chains; Homelite Chain Saw; Wooden Carpenters Box; Organizer; Cement Tools; **Other Hand & Power Tools too numerous to mention;** Rubber Roofing; Insulation; Assort. Windows; Alum. Trim Coils; Other Building Materials; 12 Volt Solar Battery Charger.

GUNS: 3030 Marlin M#336 Lever Action; 12 Gauge Stevens Pump M#77H 3" Mag; 20 Gauge Harr./Rich Trooper M#148 Full Choke Single Shot; Right Handed, 50 Cal. Thompson Center, White Mountain Carbine, Flint Lock; 22 Cal. Remington Short/Long Bolt Action, Tube Fed; 15' Metal Ladder Stand.

POCKET KNIVES: 6 Franklin Mint Wild Life Col.; Assort. Franklin Mint - Colt Pistol, John Deere, Fire Truck, 57 Chev.; 20 to 30 other assort. knives.

LAWN & GARDEN: Craftsman 12 Hp. Lawn Tractor w/32" Cut; Honda Self-Propelled Lawn Mower; Silent Reel Mowers; Wheel Barrow; Horse Drawn Cultivator; Corn Sheller; Large Wire Basket; Two Man Saws; Sleds; Double & Single Trees; **Two Complete Driving Harnesses.**

Auction Conducted for:
Christ B. & Lydia Zook

No Out-of-State Checks, Food Available

Robert E. Martin & Sons, Auctioneers

Jeffrey R. Martin - Michael L. Martin - Randall L. Ranck
AU003567L www.remartinauctions.com 717-687-0495

